

# SCHEDULE A

SKETCH PLAN OF PROPOSED SUBDIVISION OF PART OF LOT 1,  
SECTION 13, RANGE 7, MOUNTAIN DISTRICT, PLAN 41146.

**CITY OF NANAIMO  
PRELIMINARY LAYOUT  
ACCEPTANCE**

**RECEIVED**  
2023-APR-25  
SUB01490  
Subdivision Section

2023-AUG-31

Date

2024-AUG-31

Expiry Date

Approved By

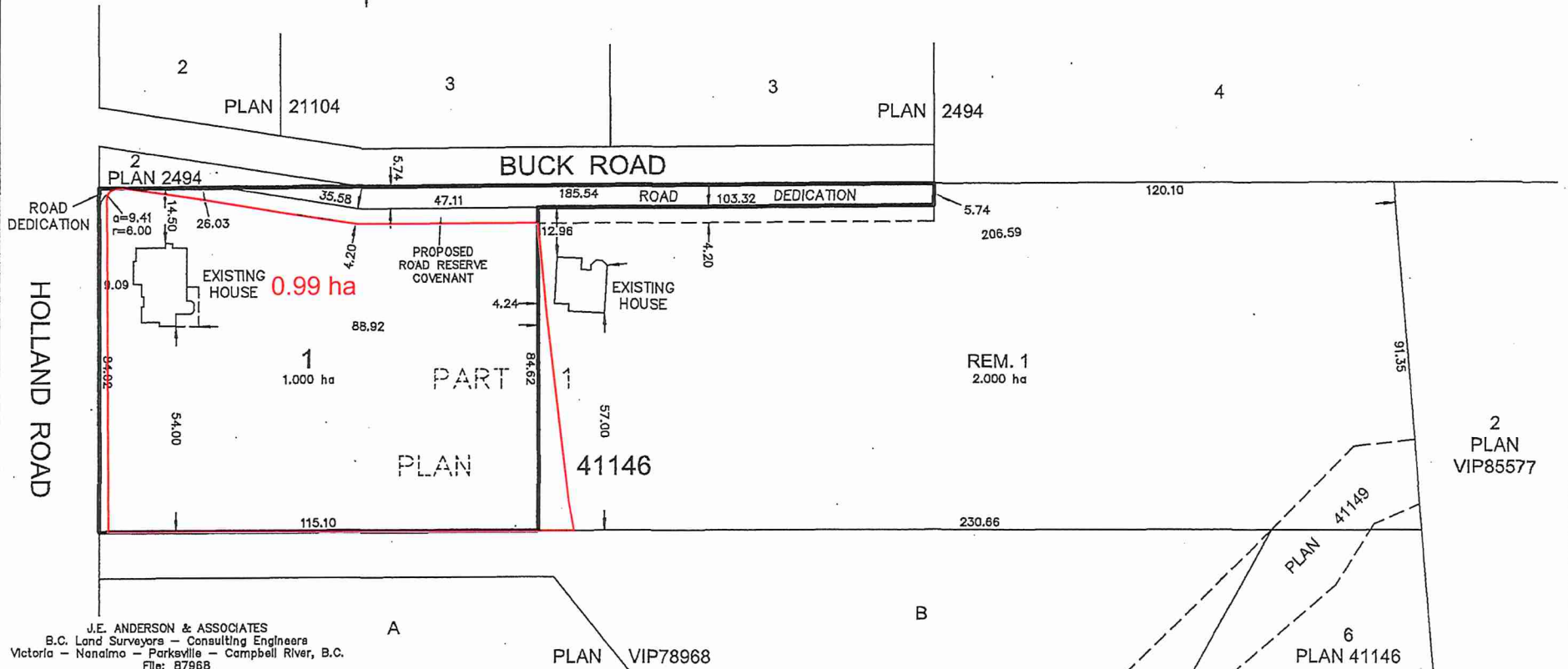


The intended plot size of this plan is 432mm in width by 280mm in height, B size, when plotted at a scale of 1:1000.

SUBJECT TO CHARGES SHOWN  
ON TITLE NO. CA1346483  
(P.I.D. 000-509-027)

DIMENSIONS ARE DERIVED FROM  
LAND TITLE OFFICE RECORDS

THIS PLAN HAS BEEN PREPARED IN  
ACCORDANCE WITH PROFESSIONAL  
REFERENCE MANUAL



J.E. ANDERSON & ASSOCIATES  
B.C. Land Surveyors - Consulting Engineers  
Victoria - Nanaimo - Parksville - Campbell River, B.C.  
File: 87968  
Date: Apr. 13/23

PLAN VIP78968

2  
PLAN  
VIP85577

6  
PLAN  
41146